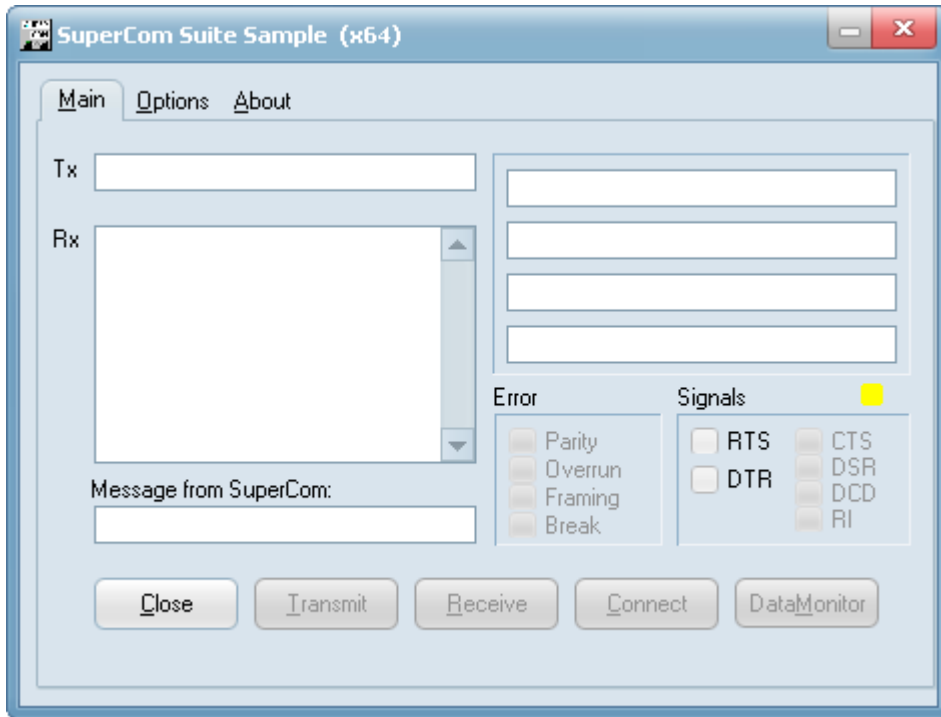
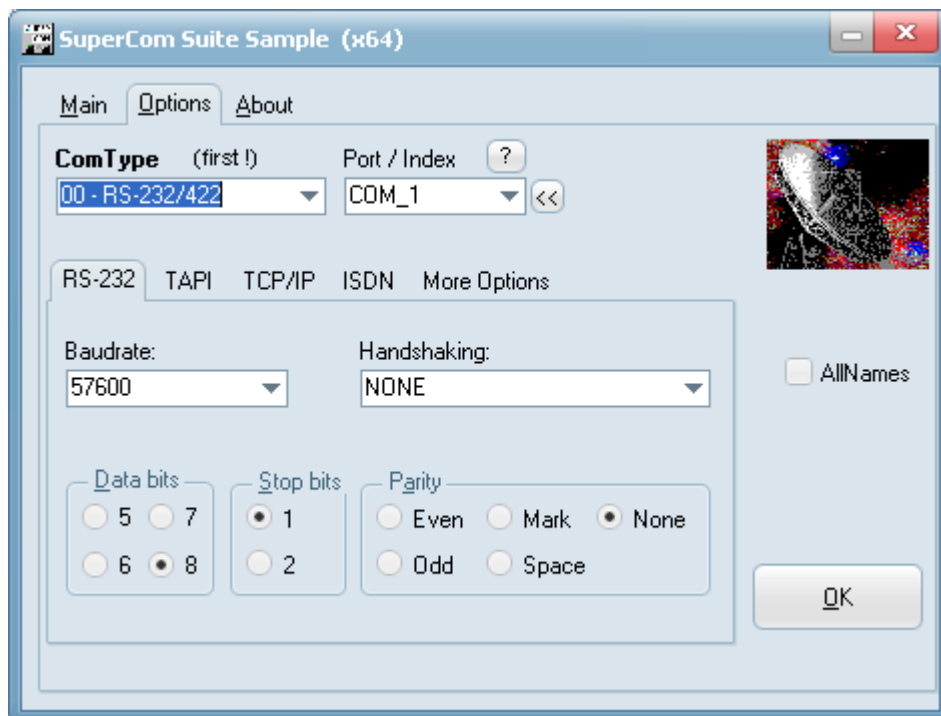


Delphi x64 Sample(s)

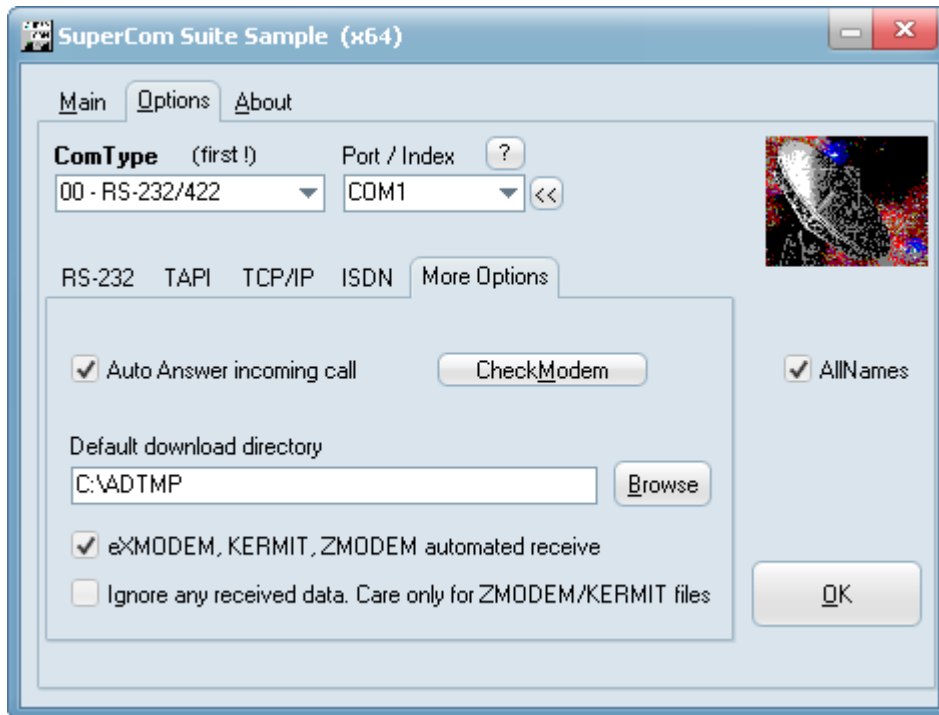
The sample presented herein supports Serial, TCP, ISDN, TAPI, Modem connections. The same program can also work as a TCP Server but also as TCP Client. This particular hot-shots taken using the SuperCom Suite but the same sample also exists in other packages. The supported features vary according to the owned SuperCom license (Serial, TCP, ISDN) . All features supported using a SuperCom Suite license.



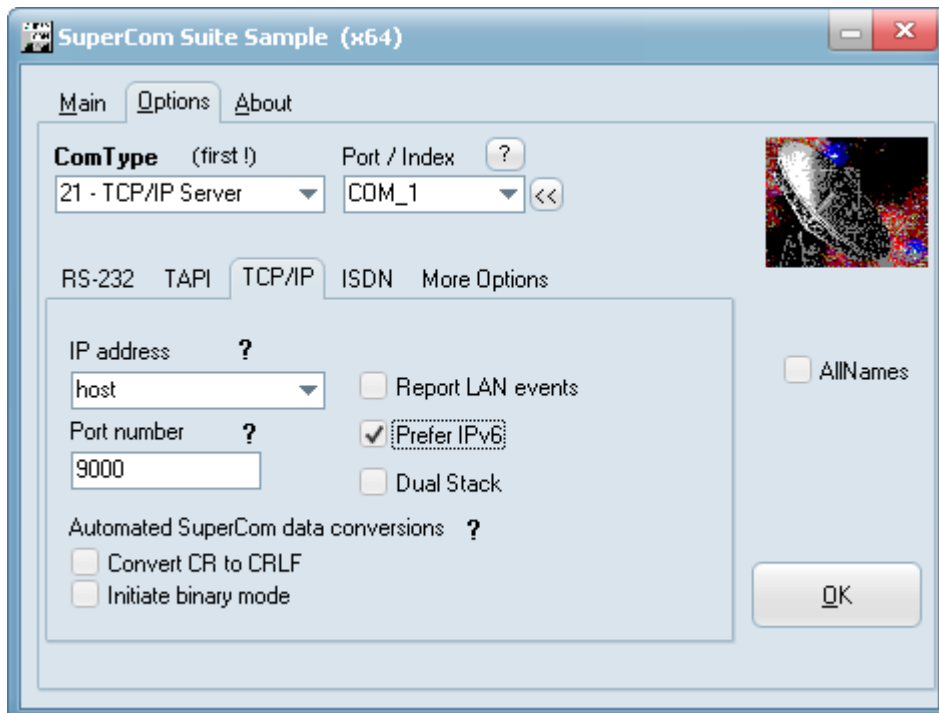
Configuring serial link.



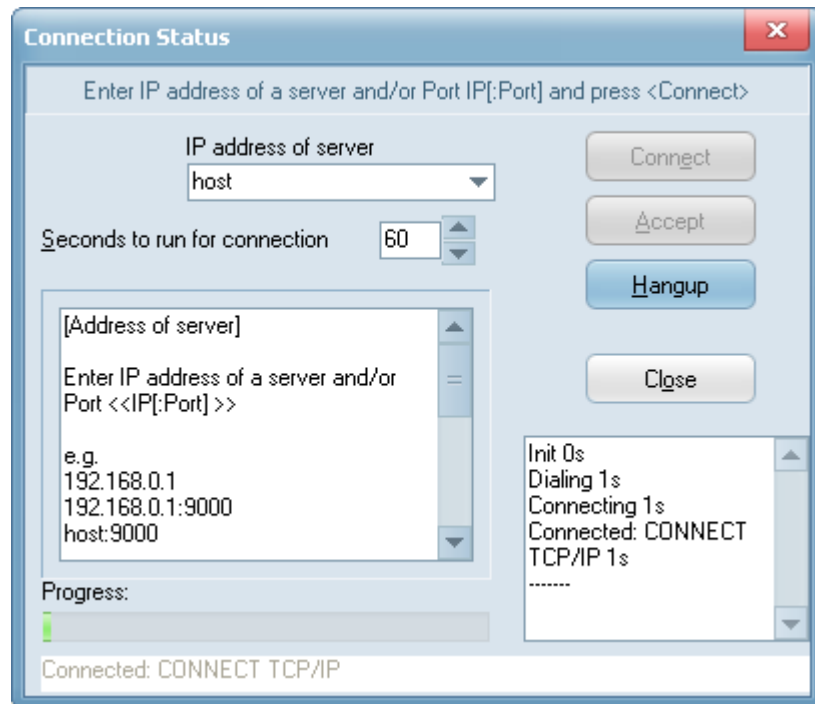
Configuring additional options:



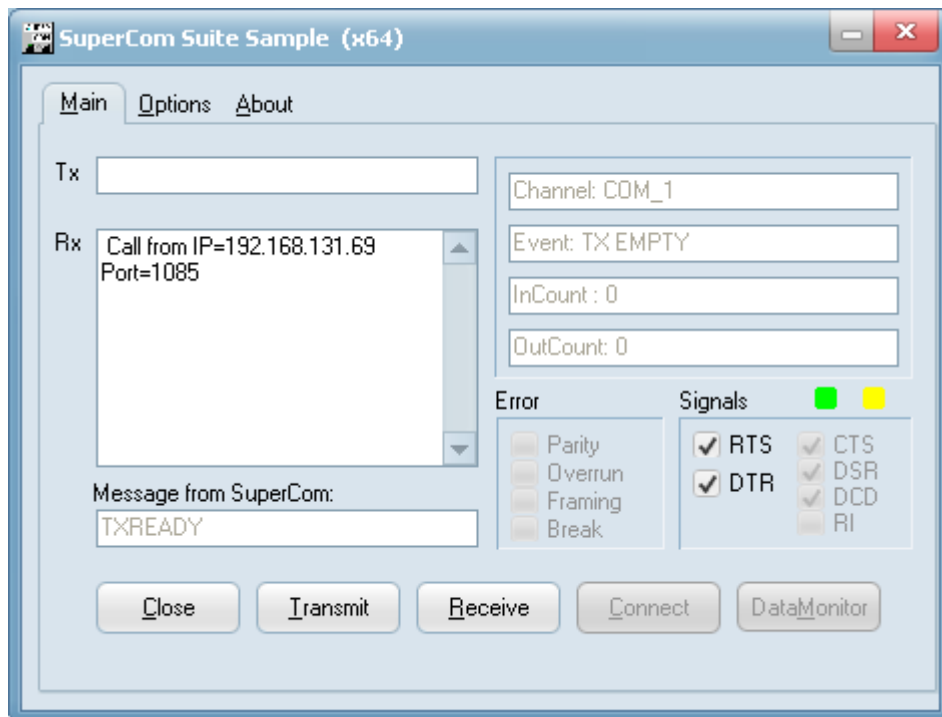
Configuring the TCP server:



When one instance configured as TCP client and contacting the other instance that is running as TCP server:



The TCP server accepting:



It is the same Delphi project compiled for the x64 platform. One can compile the same project for 32 Bit (x86) and 64 Bit (x64) by switching the compiler platform.

<http://adontec.com>

SuperCom Delphi Sample