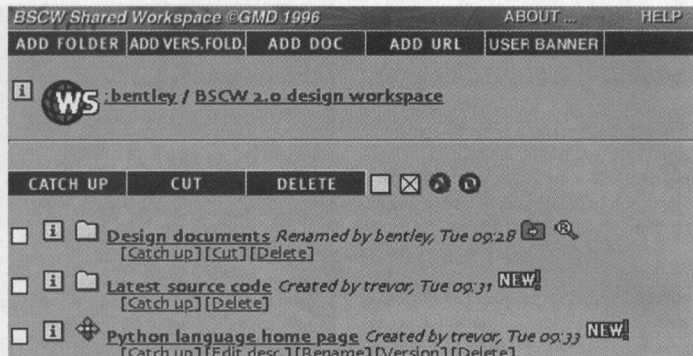


makes optimum use of network resources and no hardware upgrades are needed.

The quality of audio and video over the Net is quite restrictive; however, new protocols, the Mbone, and adaptive applications point the way toward the QoS we're going to get in a few years. But don't expect the multimedia equivalent of a free lunch. Clients will require an ISDN connection in order to get optimal video quality.

Until the Net is upgraded to better handle multimedia applications and there is smoother integration among today's LANs and WANs, the optimum solution would seem to be a system that runs across all main media types (e.g., LANs, Public Switched Telephone Network [PSTN], ISDN, and TCP/IP). Cybertec's (Newton Abbot, U.K.) V-COM software meets these requirements.

V-COM has a software codec, so transmission speed depends on the PC, the modem, and, in the case of the Net, the time of day (because of the variable delay). However, Cybertec says that V-COM brings 24 color frames per second on an analog line using a 28.8-Kbps modem and approximately 4 to 5 fps over the Net. It



Shared workspaces, such as BSCW, let users work on common documents.

also allows interactive, real-time application sharing and whiteboarding. Expect to see more all-in-one videoconferencing solutions of this kind hitting the market fairly soon.

So ignore the hype and accept the current limitations of the Net. If you need to collaborate with colleagues, clients, and the like, the Net is going to be the medium of choice for people who pay their

own phone bills. Services will improve, and collaborative multimedia applications are coming. **B**

Bob Emmerson is a BYTE correspondent who is based in Eindhoven, The Netherlands. David Greetham is a consultant with Greetham Associates in Turnhout, Belgium. You can contact them at 73252.1364@compuserve.com and at editors@bix.com, respectively.

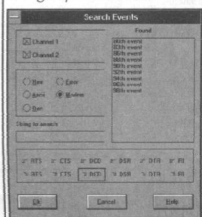
SuperMonitor for DOS, Windows

The flexible and versatile solution for your serial data and protocol analysis. The continuous graphic user interface for DOS and Windows[®] guarantees an easy operation. SuperMonitor is very quickly attached to a serial data transmission and is a silent but watchful observer of the operation.

You are now able to considerably reduce your development time and costs when setting up or monitoring a serial link by using SuperMonitor.

SuperMonitor is able to execute not only simple short measurements but also long day and night runs. In Windows 3.x up to two measurements can run simultaneously using the Twin version.

You even have the possibility as developer to extend SuperMonitor by using SuperCom the heart of SuperMonitor.



- flexible software solution
- up to 115 Kbit baud rate
- parity: none, even, odd, mark, space
- stop bits: 1, 1.5, 2
- data bits: 5, 6, 7, 8
- time stamps with a precision of 10 µs
- display of all modem lines
- dynamic trigger function
- extensive display, print and search functions
- limited buffer only through the PC memory
- data swap-out for long day and night runs
- display modes: ASCII, Decimal, Hexadecimal
- up to two simultaneously running measurements in Windows
- IRQ0..IRQ15 and any port address
- includes special adapter, cable and 16bit serial board

SuperMonitor for DOS only \$398
 SuperMonitor for Windows only \$498
 SuperMonitor for DOS+Windows only \$768
 SuperMonitor for Windows Twin only \$748
 SuperMonitor for DOS+Windows Twin only \$998
 *Windows=Windows 3.x + Windows 95



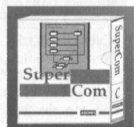
RS232-Toolkit, SuperCom for DOS, Windows, OS/2, NT, WIN 95

for MS C/C++, Visual C++, Turbo/Borland C/C++, Turbo/Borland Pascal, Delphi, IBM C/C++, WATCOM C/C++

SuperCom is the development tool for exacting serial communication software. That means high data security and highest transmission speed. The SuperCom libraries are fast even in a multitasking operating system like Windows 3.x, NT, Windows 95 or OS/2. The same programming interface is used among different languages and operating systems.

- Interrupt driven: transmission, reception, linestatus, modem status. Up to 115,200 bps.
- UARTS: 8250,16450, 16550 FIFO, any port address.
- Simultaneous COM_1..COM_36 (and unlimited).
- Direct register programming*, Interrupt-Sharing.
- Flow control: RTS/CTS, DTR/DSR, XON/XOFF and user defined, ANSI, TTY, VT52.
- Protocols: ASCII, XMODEM, XMODEM/CRC, YMODEM, YMODEM/BATCH, ZMODEM.
- Timer, Ctrl-Break and Exception handling.
- Multitasking support (Windows, NT, WIN95, OS/2)
- User Event Routines under DOS and Windows.
- Under Windows user can even post messages to the application using PostMessage.
- Language independent DLL (Windows, NT, WIN95, OS/2) which can be used for simultaneous transfers by applications.
- Multiserial board support (AST, ARNET, DigiBoard PCX, HOSTESS, STARGATE). Reduces loading of CPU through support of intelligent DigiBoard PC/Xe, PC/Xem, PC/Xi boards (up to 7 Boards/PC !!!).
- Modem support, RS422/485 support.
- Supports 286 DOS-Extender (e.g. PharLap, Borland)
- NO ROYALTIES, No resident drivers*. Just link the LIB.
- FREE technical support. FREE demo
- Full source code (C or Pascal and optimized ASM).
- SuperCom++ (C++ or Pascal OOP) included.
- Protected Mode Interface (Windows) included.

C/C++ or Pascal package for DOS only \$299
 C/C++ or Pascal package for Windows, OS/2 or NT each \$399
 C/C++ or Pascal combo pack for DOS+Windows only \$528
 C/C++ combo pack for DOS+Windows+OS/2 only \$799
 C/C++ combo pack for DOS+Windows+NT only \$799
 C/C++ combo pack for DOS+Windows+OS/2+NT only \$999
 *Under DOS and Windows, Windows=Windows 3.x + Windows 95 16bit, NT=Windows NT + Windows 95 32bit



NEW!!! COMM-Enhancer for Windows 3.x

Forget the Windows 3.x COMM API limitations. Use the COMM-Enhancer and extend your Windows 3.x COMM API based applications. Up to 40 channels (COM1..COM40!) and up to 115,200 bps. It uses SuperCom!!!!
 Price \$299 (together with any SuperCom combo supporting Windows 3.x \$199!)

ADONTEC Computer Systems Ltd
 Holderlinstr. 32
 D-75433 Maulbronn, Germany
 Phone: +49-7043-9000-20
 FAX: +49-7043-9000-21

USA
 Phone: +1-711-711-7111
 FAX: +1-711-711-7111

In Israel, call:
 Phone: +972-5-1111111
 FAX: +972-5-1111111
 In Italy, call:
 Phone: +39-4-1111111
 FAX: +39-4-1111111